

[Send to a Friend](#) | [Suggestions?](#)

vol.9 #32 (49)  
 Tuesday, September 1, 2009  
 From: [SoftInWay Inc.](#)

### Summary

1. [Upcoming Events](#)
2. [Penn State Has Adopted AxSTREAM into Its Engineering Curriculum](#)
3. [Steam Turbine Fundamentals Training Course Has Been Launched](#)
4. [AxSTREAM Introductory Seminar in India](#)
5. [New Features of AxSTREAM](#)
6. [EURO/CFD Has Become SoftInWay's Distributor in France](#)
7. [SoftInWay in Turbomachinery International](#)
8. [Presentation of SoftInWay's Paper at the Gas Turbine Symposium in Turkey](#)

### UPCOMING EVENTS

SoftInWay is continually expanding its program of educational and marketing activities to meet the global demand for cutting-edge technology in the turbomachinery design and retrofitting fields.

[Introductory Seminars on AxSTREAM – Software System for Design, Analysis and Multidisciplinary Optimization of Turbomachinery Flow Path.](#)

Seminar schedule:



- October 16 in Tokyo (Japan);
- October 19 in Beijing (China);
- November 19 in Paris (France).

To register for this seminar, please send a query containing your name, company, country, email and phone to [info@softinway.com](mailto:info@softinway.com).

[Integrated Course on Axial Turbine Fundamentals and Turbomachinery Design with AxSTREAM.](#) To meet the growing demand for our new course "Axial Turbine Fundamentals", SoftInWay has combined the class with the AxSTREAM Training Workshop, providing an intensive 5-day program focusing on the basics of axial turbines and turbomachinery design with AxSTREAM.

The course now consists of two independent parts:

- Axial Turbine Fundamentals (2 days). During this course the attendees will learn the fundamentals of thermodynamics, gas dynamics, structural analysis and basics of axial turbines and their elements.
- AxSTREAM Interactive Workshop on Turbomachinery Flow Path Design and Optimization (3 days). The objective of this course is to provide engineers with in-depth knowledge and top-notch software solutions to develop highly-performance turbomachines required by their customers.

*"The training course was very informative and helpful and will hopefully give me a good basis in becoming a competent user of the software. Thanks once again and I look forward to working with you again soon."*

*Nathan Abbott,  
 Dresser-Rand Company Ltd*

Training Course Schedule:

- September 21-25 in Dusseldorf (Germany). [REGISTER >>](#)
- October 2-6 in Bangkok (Thailand). [REGISTER >>](#)
- October 13-15 in Tokyo (Japan) (AxSTREAM Interactive Workshop – 3 days) [REGISTER >>](#)
- November 9-13 in Boston (MA, USA), (presentation of AxSTREAM 3.0). [REGISTER >>](#)

[SoftInWay at Power Gen International 2009.](#) SoftInWay will be among 18,000 power professionals to participate in Power Gen 2009 where the company will showcase its achievements in the areas of turbomachinery design, optimization and retrofitting.

Visit SoftInWay:

- December 8-10 in Las Vegas Convention Center, Las Vegas (NV, US).  
 If you would like to schedule a personal meeting in advance, please contact us by [info@softinway.com](mailto:info@softinway.com).

### PENN STATE HAS ADOPTED AxSTREAM INTO ITS ENGINEERING CURRICULUM

SoftInWay proudly announces that the Pennsylvania State University has adopted AxSTREAM into the curriculum of its Department of Mechanical and Nuclear Engineering. The educational version of AxSTREAM software contains modules for preliminary design, 1D/2D analysis, flow path design and multidisciplinary optimization, profiling, 3D blade stacking and 3D FEA/CFD analysis; and supports four types of turbomachines (axial turbine, axial compressor, radial turbine and radial compressor).

The AxSTREAM program for academia is aimed at accelerating the speed of learning and improving the practice of turbomachinery design. Dr. Horacio Perez-Blanco, Professor of Mechanical Engineering with over 30-year teaching experience, believes that the incorporation of AxSTREAM will result in well-trained and industry-ready students – future turbomachinery design engineers:



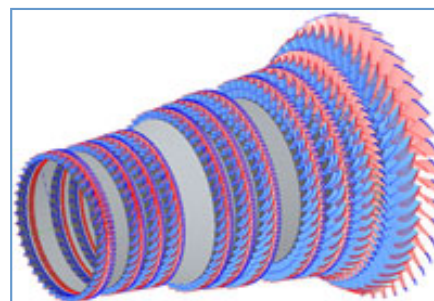
*"We are pleased to announce our agreement to employ AxSTREAM for teaching Gas Turbines and Turbomachinery during the academic year F09-SP10, as this software covers the advanced design aspects that other courses don't. We project that students will gain a much better understanding of 3D considerations using the visual and analytical tools provided by SoftInWay."*

Read more at the [Penn State website](#).

Find further information about [AxSTREAM educational suite](#).

### STEAM TURBINE FUNDAMENTALS TRAINING COURSE HAS BEEN LAUNCHED

SoftInWay has released a new training course for mechanical engineers – Steam Turbine Fundamentals. The course covers the basics of thermodynamics, gas dynamics, structural analysis and essentials of steam turbine and its elements to help engineers better carry out their design and operation tasks.



The Steam Turbine Fundamentals program was developed by industry experts from SoftInWay who have more than 30 years of experience designing steam turbines from 1 to 1000 MW and teaching turbomachinery. Comprehensive and example-rich, this training course enables attendees to push the envelope of turbomachinery design and discover effective all-in-one solutions.

*"It is an extremely useful and educational course, a must for anyone working within the design and development of turbines. The course has a well thought out approach to the fundamentals of steam properties, turbine blade design and optimization, including many other aspects of complete machine design. The course material is clear and concise, and an excellent source for future reference."*

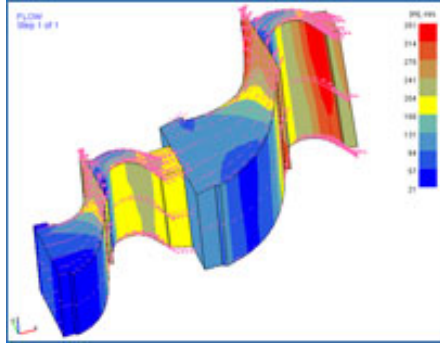
*James Richmond,  
 Dresser-Rand Company Ltd*

Visit our website for the [training course syllabus](#).

## NEW FEATURES OF AxSTREAM

A new release of [AxSTREAM software](#) for turbomachinery design, analysis and multidisciplinary optimization has been launched. Starting from this version:

- the Streamline Solver performs 1D/2D analysis for radial turbine;
- AxCFD (3D flow solver) is expanding to calculate water and gas with models based on the Van der Waals and Redlich-Kwong equations of state;
- the k-e turbulence model was incorporated into AxCFD;
- the standard RNG k-ε and standard SST k-ω turbulence models were added;
- blade design frame displays 3D cylinder flow path;
- mesh quality is assigned for blade to blade and hub to shroud;
- visualization of mesh is available before calculations;
- AxCFD performs 3D analysis of the whole flow path.



## AxSTREAM INTRODUCTORY SEMINAR IN INDIA

On July 14 in Bangalore, India SoftInWay held a free introductory seminar where Ronnie Lindgren, the company's International Sales Manager, presented innovative methods of efficient turbomachinery flow path design using AxSTREAM. This event provoked a wide response in the Indian media, attracting local turbomachinery manufacturers. Since the growing energy costs are crucial for many sectors of industry, AxSTREAM is of particular interest to Indian mechanical and aerospace engineers who want to maximize product functionality and reduce time to market.

The seminar was organized with support of DesignTech Systems Ltd – a distributor of AxSTREAM software in India. Mr. Vikas Khanvelkar, Managing Director of DesignTech Systems, remarked:

*"Our company is extremely proud to partner with SoftInWay for AxSTREAM. Efficiency in designing has taken a new urgency thereby making designing or analysis of turbomachinery a very challenging role. AxSTREAM is the only solution for optimum turbomachinery design and analysis."*

## PRESENTATION OF SOFTINWAY'S PAPER AT THE GAS TURBINE SYMPOSIUM IN TURKEY

SoftInWay took part in the [International Symposium](#) on "Heat Transfer in Gas Turbine Systems" that was held on August 9-14, in Antalya, Turkey. During the symposium Mr. Kirill Grebennik from SoftInWay presented the paper "Comparison of Counter-Rotating and Traditional Axial Aircraft Low-Pressure Turbines Integral and Detailed Performances".

The paper covers and helps overcome such engineering challenges as the necessity of making tradeoffs between high aircraft engine efficiency, low fuel consumption level and severe geometrical restrictions. The presentation was well received by the audience and favored the establishment of new connections in the international thermal and fluid sciences communities.

[Read this paper.](#)

## HOT VACANCIES

**We currently invite you to explore the vacancies that the links below are leading to:**

[Sales Engineer/Project Manager](#)

[Project Manager](#)

[CAE Software Developer](#)

You will join a strategically focused and highly motivated team involved in Scientific, Mechanical Engineering, Design Consulting and Software Development. You also will have an opportunity to work on multiple projects in a flexible, friendly environment.

## EURO/CFD HAS BECOME SOFTINWAY'S DISTRIBUTOR IN FRANCE



EURO/CFD, one of the leading European CFD companies, has become SoftInWay's distributor in France. Founded in 2005, the company specializes in numerical simulation and has the computing power of over 220 processors. Due to its good name at the market of CFD solutions and large client network, EURO/CFD will be a

valuable asset to raise awareness of AxSTREAM software in the French region.

*"Our relationship with EURO/CFD will ensure that there is usable and highly-performance turbomachinery design software available to French mechanical and aerospace engineers to deliver first-class accuracy and considerably speed up the product development process,"* – admitted Leonid Moroz, President and CEO of SoftInWay Inc.

## SOFTINWAY IN TURBOMACHINERY INTERNATIONAL

The global journal of energy equipment [Turbomachinery International](#) has published SoftInWay's article "Designing the Flowpath. Robust and Efficient Aerodynamic and Structural Solvers Can Provide an Integrated Software Solution for Performing the Entire Workflow".

## ABOUT SOFTINWAY CORPORATION

SoftInWay Inc. is a USA corporation, headquartered in Burlington, MA. The company's mission is to serve the high technology community by providing software products and engineering services in the area of research, design and digital prototyping of power generation equipment. SoftInWay develops products for rapid turbomachinery design, provides technical engineering services and uses in-house and industry standard CFD, FEA and CAD tools to address design issues at the earliest possible stage to maximize engineering productivity and increase the efficiency and reliability of equipment. The core product, AxSTREAM™, is an integrated solution based on over 400 years of collective turbomachinery experience of SoftInWay engineering team, with the clear goal of bringing to industry a professional software tool for rapid, optimized turbomachinery flow path design.

For more information, visit <http://www.softinway.com/> or call 781-862-7867.

### Opt-out info

This mail has been sent to: [E-MAIL]

If you wish to no longer receive the email version of our newsletter or if you consider it as unsolicited commercial e-mail, reply with the Subject line "Discontinue" and include your original email address/addresses in the subject heading. Please include your complete list of email addresses where our mail was received and reply along with the From: and To: addresses left intact. We will immediately update our list accordingly.

We apologize if receipt of this email has caused any inconvenience.

Under Bill s.1618 Title III passed by the 105th U.S. Congress this mail cannot be considered Spam as long as we include contact information and a remove link for removal from our mailing list.

This document is provided for informational purposes only. The information in this Newsletter represents the current view of SoftInWay Inc. on the issues discussed and is given 'as is' without warranty of any kind, either expressed or implied.

The user assumes the entire risk as to the accuracy and the use of this document.  
All trademarks acknowledged. Copyright © SoftInWay, Inc. 1999 -2009